

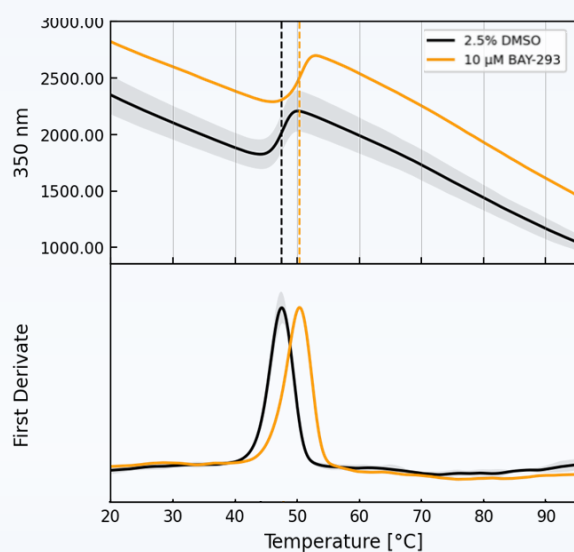
# SOS1

Ready to Go Assays • Customizable • Cost-Effective • Fast Turnaround Time

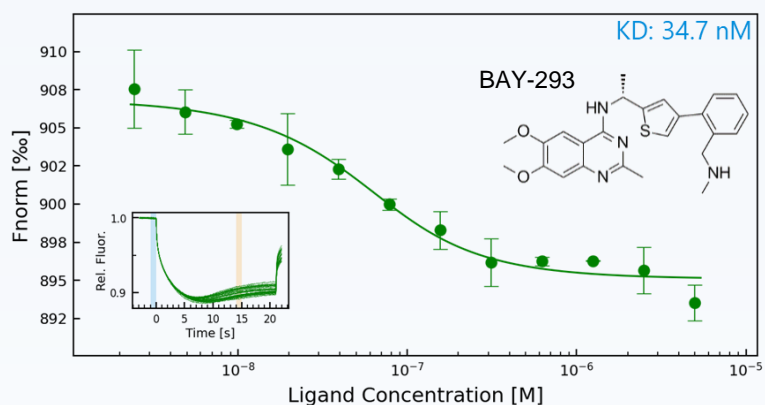
## Ready-To-Go Biophysical and Biochemical Assays

- Established labeling method
- Published non-covalent\* tool compound
- Up to 3  $T_m$ s /  $K_d$ s /  $IC_{50}$ s included
- 2 weeks turnaround time

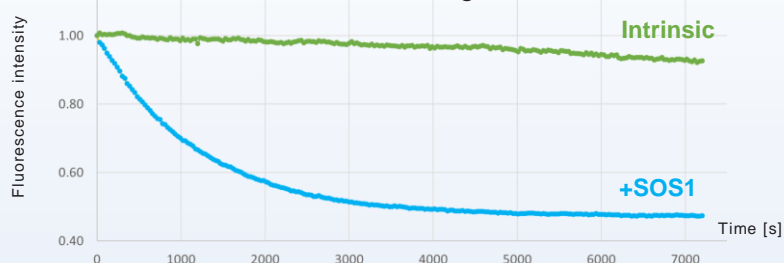
LabelFree TSA (nanoDSF)



Labeled MST



Nucleotide exchange of KRAS

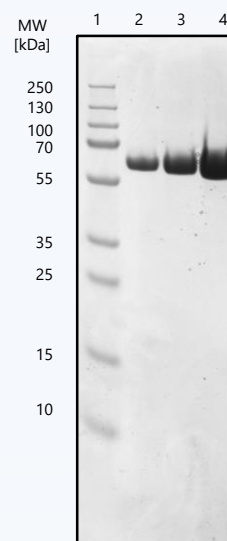
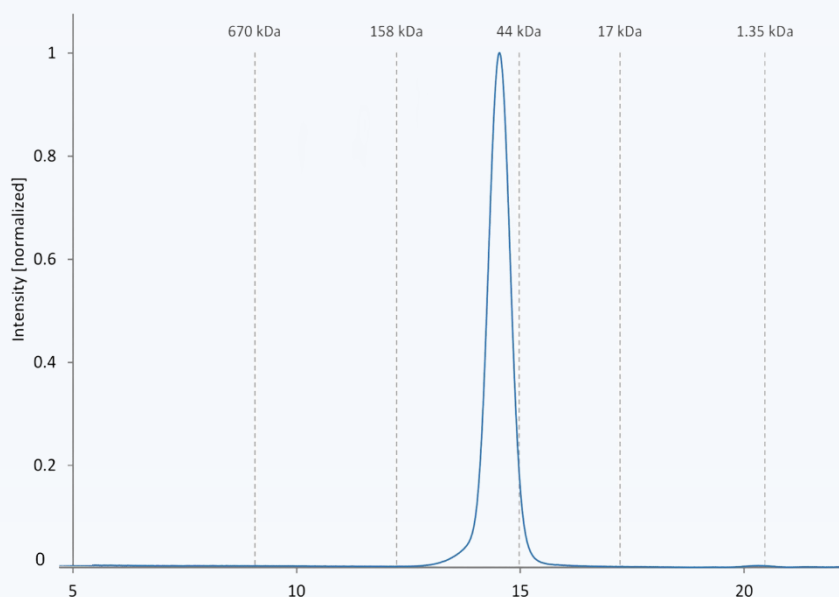


\*An optimization package to test covalent compounds (nanoDSF, MST) can be purchased additionally

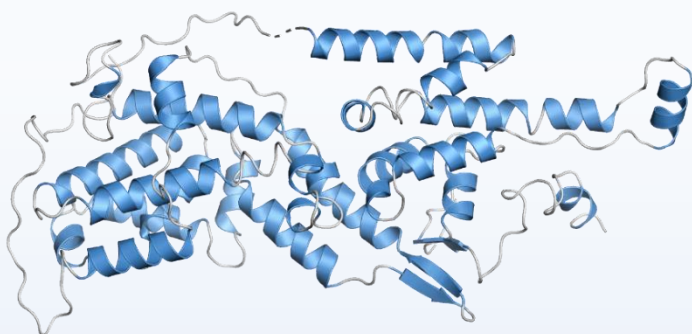
## Prime Protein Production

### Different constructs available

- His-tagged / untagged constructs
- Protein complex KRAS-SOS1
- Stocked protein available



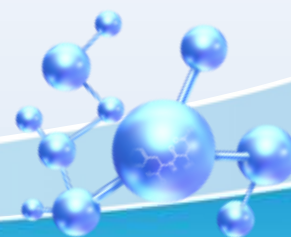
## X-ray Crystallography



SOS1 structure at 1.7Å

### Crystallization systems established

- SOS1
- Allosteric and non-covalent compounds
- 2 Months turnaround time



Search for more  
protein info



www.wuxibiology.com



Find us via  
LinkedIn

## Contact Us

Crelux\_CR@wuxiapptec.com  
BD USA: mahnaz\_arjomand@wuxiapptec.com  
BD EU/UK/Israel: dave\_madge@wuxiapptec.com

DB\_Service@wuxiapptec.com  
BD China: xu\_longji@wuxiapptec.com  
BD Japan: fumio\_itoh@wuxiapptec.com  
BD Korea: sycho@wuxiapptec.com