

Cancer pharmacology services

- Integrated package of pre-clinical cancer pharmacology services
- For targeted oncology and immuno-oncology:
 - *in vitro* cell-free and cell-based assays
 - *in vivo* tumor models
- Multidisciplinary *ex vivo* PD analysis

-in vitro assays

- **Biochemical assays**
HTRF, AlphaScreen, High throughput screening, FRET, ADP-Glo
- **Biophysical assays**
SPR with Biacore 8K, HTRF, ELISA, AlphaLisa FACS
- **Cellular assays**
Viability and cytotoxicity
Spheroid/Organoid
600+ human cancer cell lines
95+ PDX-derived cell lines



-in vivo tumor models

- **Targeted oncology**
360+ CDXs/**30** cancer types
1,500+ PDXs/**30** cancer types
Well annotated by **SOX** and gene expression profiling
- **Immuno-oncology**
91 syngeneic models/**21** cancer types
Transgenic mice for **20+** targets
25+ PBMC/HSC/NK humanized models
- **Translational models**
42 orthotopic models/**15** cancer types
37 metastatic models/**10** cancer types
40 drug resistant models/**14** key targets
Hamster and rat models
- **Informative online database**
2,100+ model datasets
Growth kinetics: **3,000**
Histopathology: **2,800**
Pharmacological sensitivity: **4,000**

-ex vivo PD analysis

Molecular PD assays

Gene expression analysis

Protein expression analysis

Cytokine expression analysis

Meso Scale Discovery (MSD) Luminex Multiplex System

Histopathology

Single IHC/IF

Multiplex IF up-to 12 colors

BaseScope and RNAScope

Flow cytometry

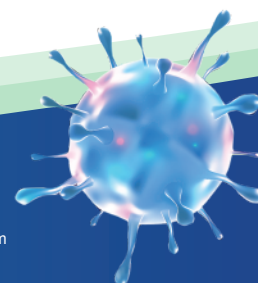
Cytek Aurora (**40** colors)
BD LSR Fortessa (**18** colors)
BD LSR Fortessa X20 (**18** colors)
BD Canto plus (**10** colors)
BD Canto II (**8** colors)
BD FACS Aria II (**18** colors)
IntelliCyt iQue3



Contact us

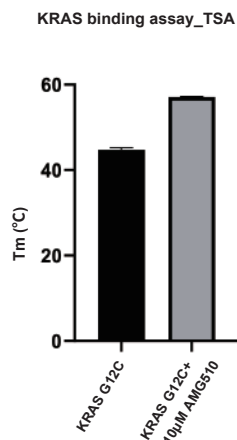
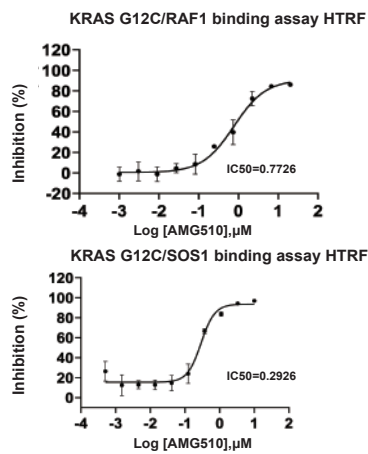
Technical: Pharmacology-BD-Translation@wuxiapptec.com
BD USA: mahnaz_arjomand@wuxiapptec.com
BD EU/UK/Israel: dave_madge@wuxiapptec.com

BD China: xu_longji@wuxiapptec.com
BD Japan: fumio_itoh@wuxiapptec.com
BD Korea: sycho@wuxiapptec.com

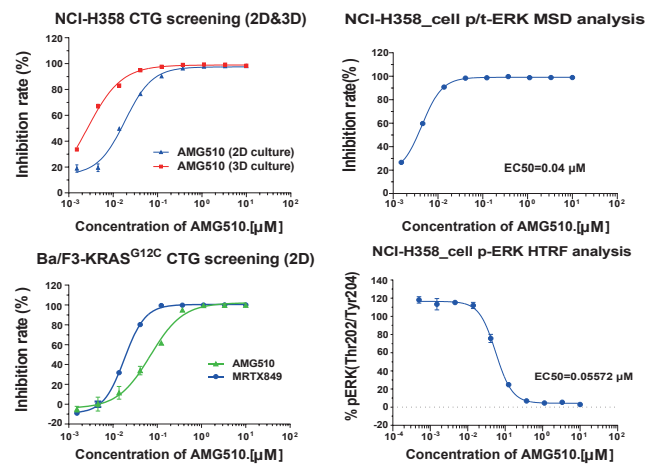


Case study: pharmacological evaluation of a KRAS G12C inhibitor

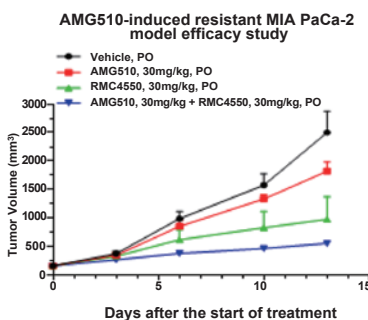
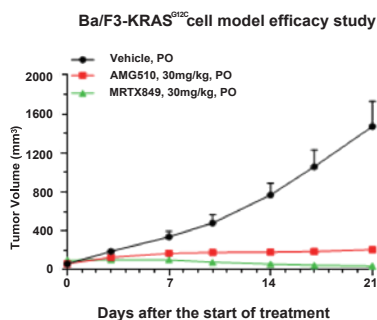
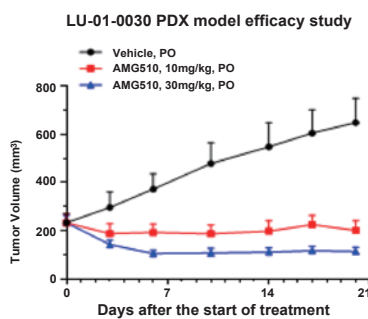
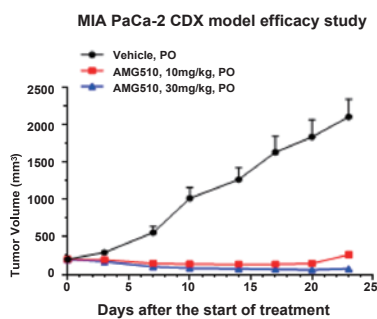
1 Protein-based screening



2 Cell-based screening and MoA



3 in vivo model efficacy study



4 ex vivo PD analysis

