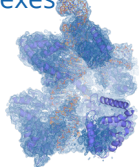


Cryo-EM

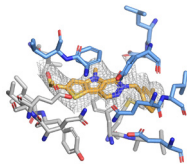
De novo Structure Determination

- Membrane proteins
- Multi-domain proteins
- Multi-subunit complexes



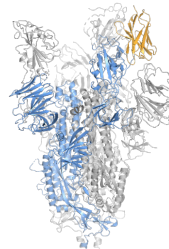
Structure-Based Drug Discovery

- Determination of small molecule binding mode
- Support of hit-to-lead optimization projects



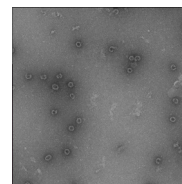
Epitope Mapping

- Characterization of epitope-paratope interactions

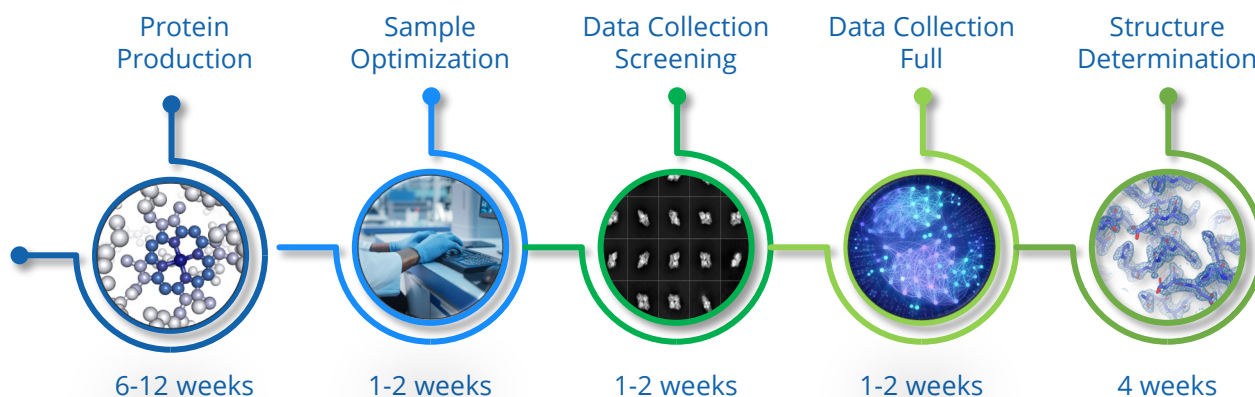


Formulation Characterization

- LLP and VLP Characterization
- Formulation screening and optimization



Gene-to-Structure Workflow



Experience and Cutting-Edge Facilities

- >20 cryo-EM structures determined in 2023
- 15 years' experience structural biology sample preparation
- 7 PhD-level scientists with proven EM track record
- In-house sample preparation laboratory (Vitrobot IV)
- Rapid access to screening (Glacios) and data collection (Krios) microscopes
- Close integration with protein production, biochemistry, biophysics and screening groups

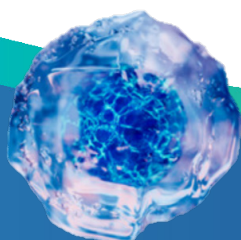
Contact us

Technical Experts:

Crelux CR@wuxiapptec.com

DB_Service DB_Service@wuxiapptec.com

Website: wuxibiology.com



Search for more
protein info



Find us via
LinkedIn