

# Helicases – Established Services

Ready to Go Assays • Customizable • Cost-Effective • Fast Turnaround Time

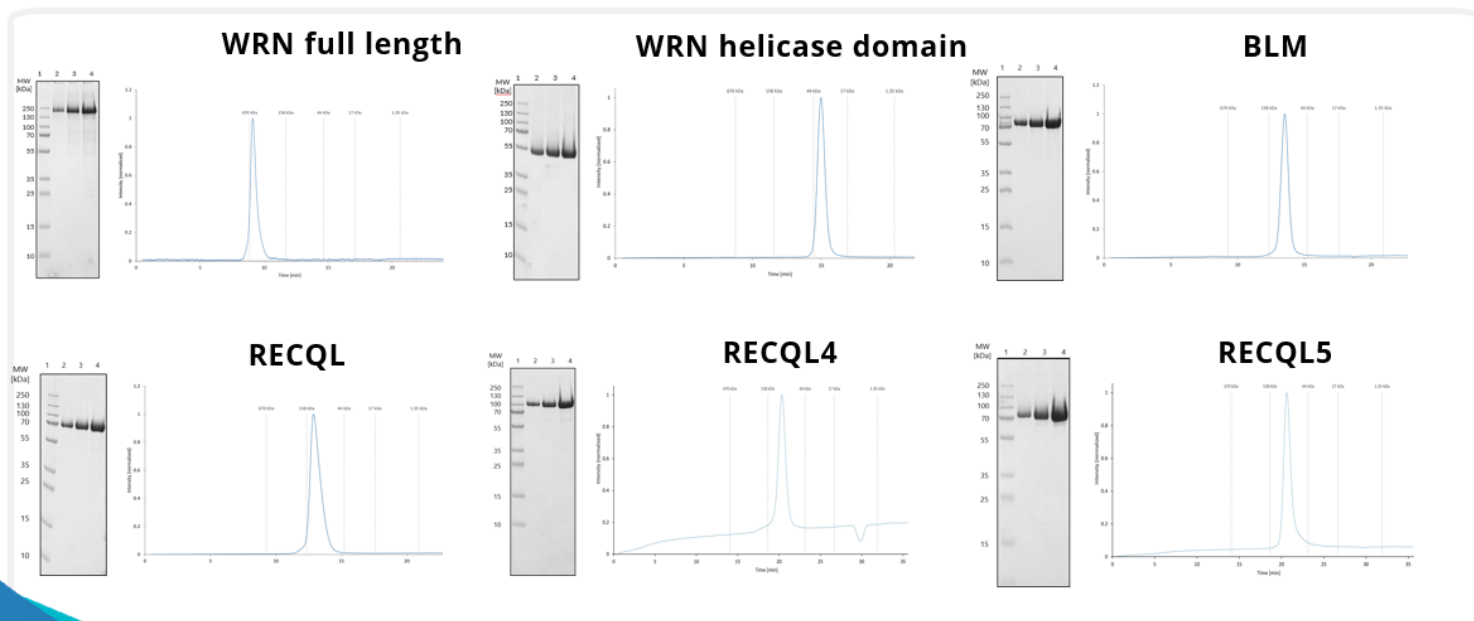
	WRN	BLM	RECQL	RECQL4	RECQL5
<b>Protein Production</b>	>100 constructs fully established (different domains various tags,) off-the-shelf	High quality production fully established off-the-shelf	High quality production fully established off-the-shelf	High quality production fully established off-the-shelf	High quality production fully established off-the-shelf
<b>Biophysical &amp; Biochemical Assays</b>	<ul style="list-style-type: none"> <li>nanoDSF</li> <li>labeled MST</li> <li>SPR</li> <li>DNA unwinding</li> <li>ADP Glo</li> <li>non-covalent and covalent compounds, +/- DNA / ATP<math>\gamma</math>S</li> </ul>	<ul style="list-style-type: none"> <li>nanoDSF</li> <li>labeled MST</li> <li>SPR</li> <li>ADP Glo</li> <li>DNA unwinding</li> <li>non-covalent compounds, +/- DNA / ATP<math>\gamma</math>S</li> </ul>	<ul style="list-style-type: none"> <li>nanoDSF</li> <li>labeled MST</li> <li>SPR</li> <li>ADP Glo</li> <li>DNA unwinding</li> <li>non-covalent compounds, +/- DNA / ATP<math>\gamma</math>S</li> </ul>	<ul style="list-style-type: none"> <li>nanoDSF</li> <li>labeled MST</li> <li>ADP Glo</li> <li>non-covalent compounds, +/- ATP<math>\gamma</math>S in the presence of DNA)</li> </ul>	<ul style="list-style-type: none"> <li>nanoDSF</li> <li>labeled MST</li> <li>ADP Glo</li> <li>(non-covalent compounds, +/- ATP<math>\gamma</math>S in the presence of DNA)</li> </ul>
<b>Crystallography</b>	<ul style="list-style-type: none"> <li>Apo</li> <li>ATP<math>\gamma</math>S</li> <li>Inhibitor-bound</li> </ul>				



Other established protein targets containing helicase domains: **POLQ Helicase**, **SMARCA2**

In development: **FANCM**

## Prime Protein Production



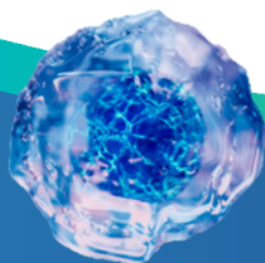
Contact us

Technical Experts:

Crelux [CR@wuxiapptec.com](mailto:CR@wuxiapptec.com)

DB [Service@wuxiapptec.com](mailto:Service@wuxiapptec.com)

Website: [wuxibiology.com](http://wuxibiology.com)



Search for more protein info

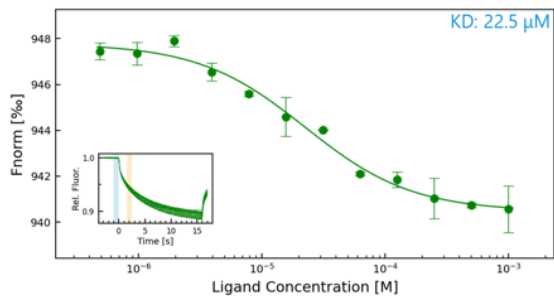


Find us via LinkedIn

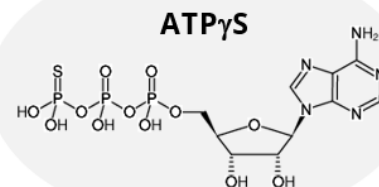
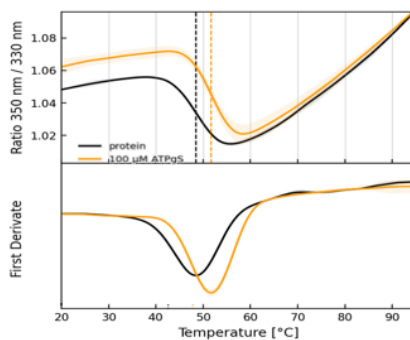
## Helicases – Established Services

### Ready-To-Go Biophysical and Biochemical Assays (WRN)

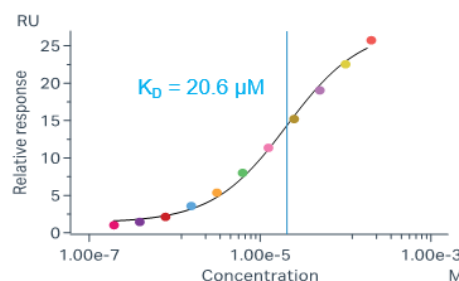
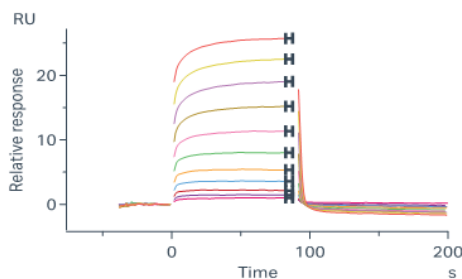
#### Labeled Microscale Thermophoresis (MST)



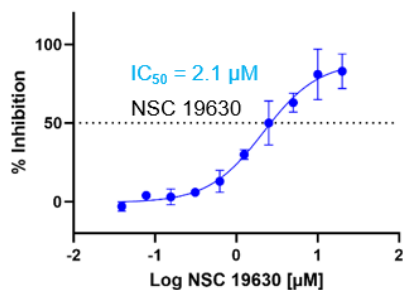
#### nanoDSF - label-free TSA



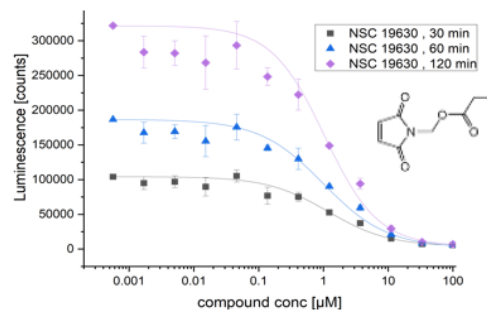
#### Surface Plasmon Resonance (SPR)



#### DNA unwinding assay



#### ADP Glo



### X-ray Crystallography (WRN)

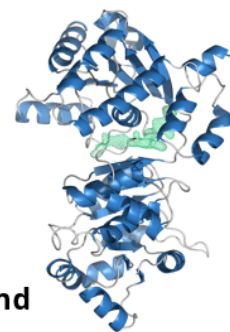
Apo



ATP $\gamma$ S bound



Inhibitor bound



Technical Experts:

CreLux [CR@wuxiapptec.com](mailto:CR@wuxiapptec.com)

DB [Service@wuxiapptec.com](mailto:Service@wuxiapptec.com)

Contact us

[wuxibiology.com](http://wuxibiology.com)