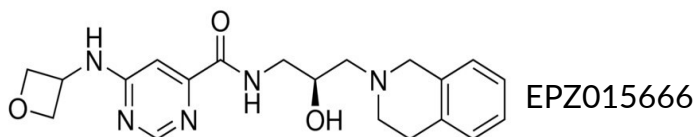


# PRMT5-WDR77 (MEP50)

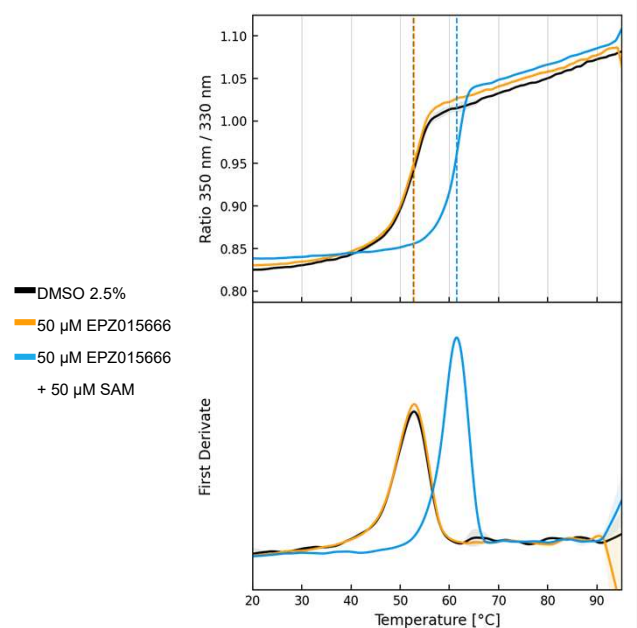
Ready to Go Assays • Customizable • Cost-Effective • Fast Turnaround Time

## Variety of biophysical and biochemical Assays Available

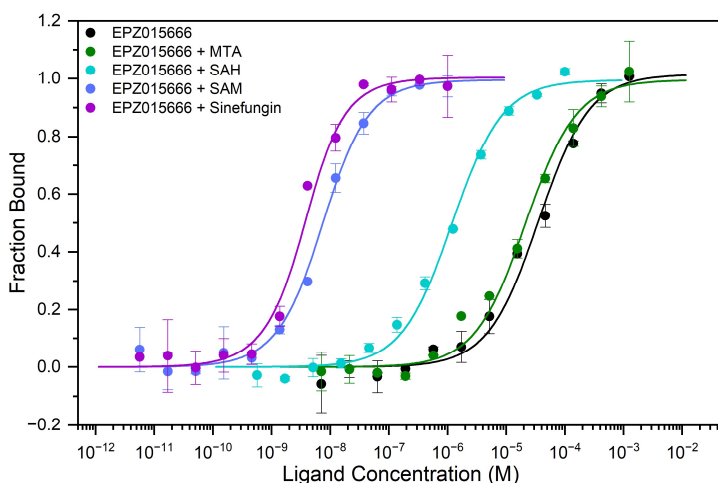
- Screening ready systems available allowing to test compounds in the presence of SAM, SAH, MTA and Sinefungin
- 2 weeks turnaround time



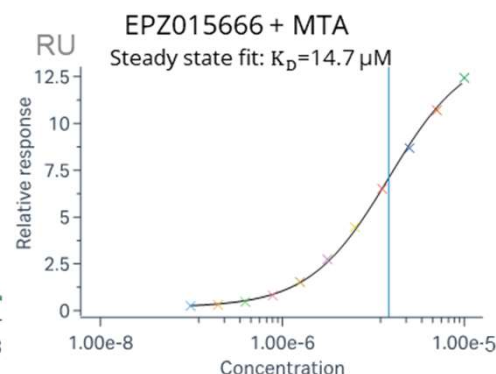
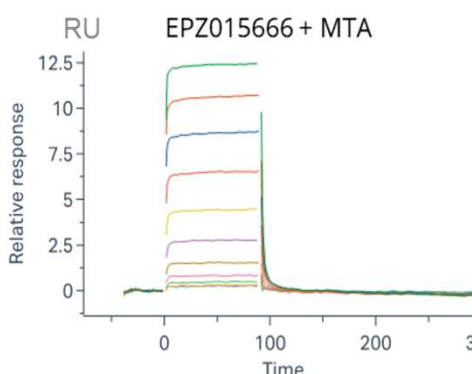
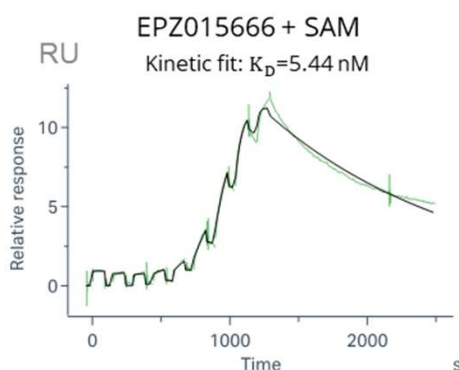
### Labelfree TSA (nanoDSF)



### Labeled MST & Spectral Shift

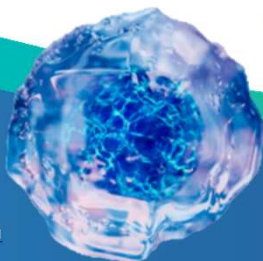


### SPR



Contact us

Technical Experts:  
[Crelux\\_CR@wuxiapptec.com](mailto:Crelux_CR@wuxiapptec.com)  
[DB\\_Service@wuxiapptec.com](mailto:DB_Service@wuxiapptec.com)



wuxibiology.com



Search for more protein info



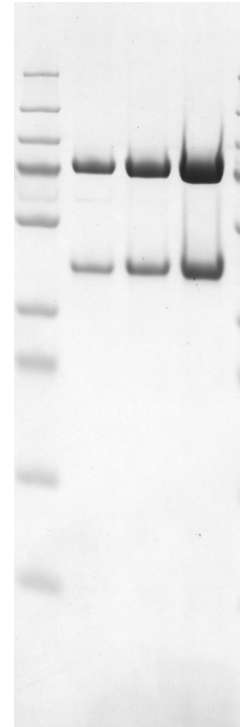
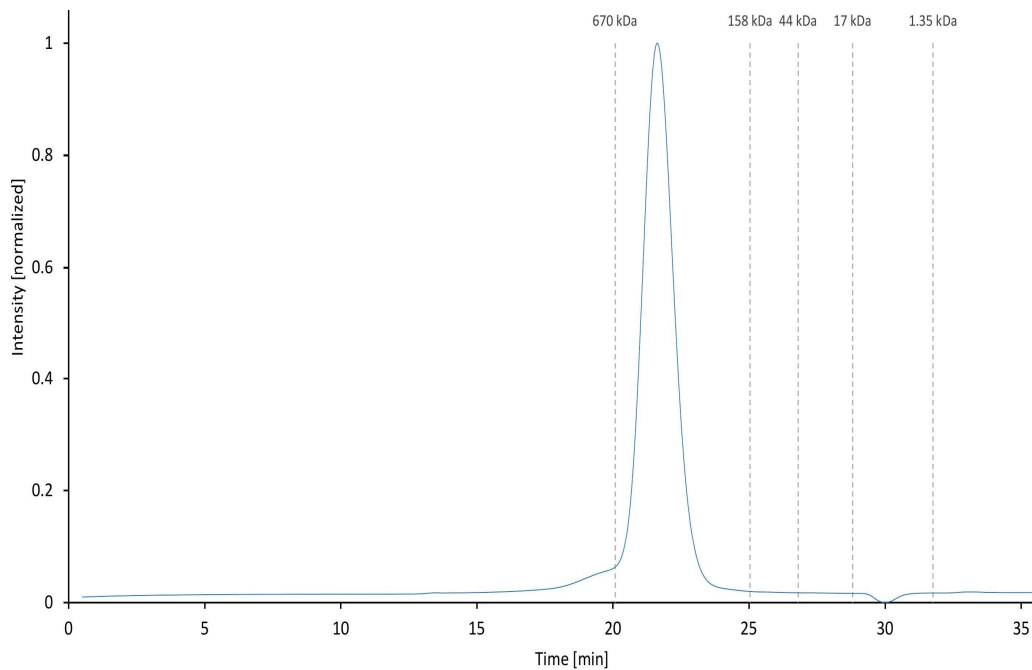
Find us via LinkedIn

## PRMT5-WDR77 (MEP50)

### Prime Protein Production

His- and Avi-tagged constructs available

Stocked protein available



### X-ray Crystallography

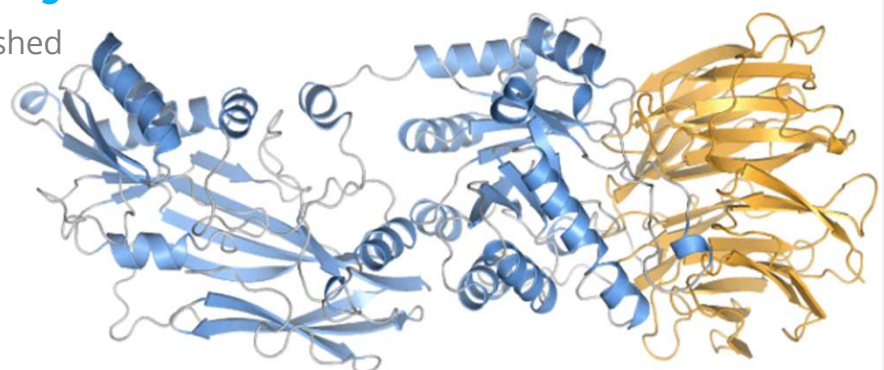
Crystallization systems established

Co-crystallization system in the presence of co-factors

Over 10 structures solved

Average resolution: 2.1 Å

2 Months turnaround time



PRMT5

WDR77

Technical Experts:

[Crelux\\_CR@wuxiapptec.com](mailto:Crelux_CR@wuxiapptec.com)

[DB\\_Service@wuxiapptec.com](mailto:DB_Service@wuxiapptec.com)

Contact us

[wuxibiology.com](http://wuxibiology.com)