

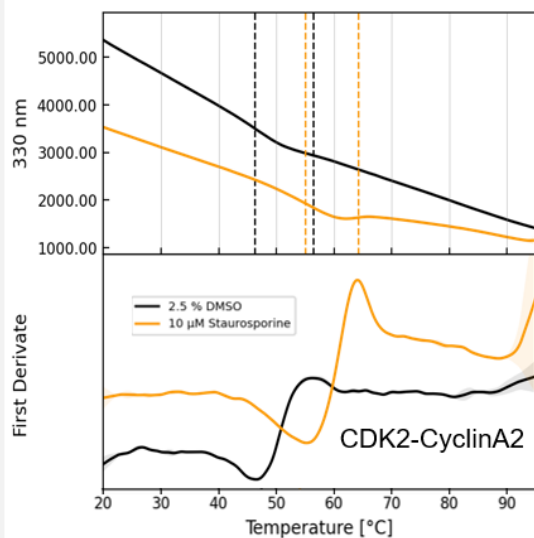
CDK2-CyclinE1/A2

Ready to Go Assays • Customizable • Cost-Effective • Fast Turnaround Time

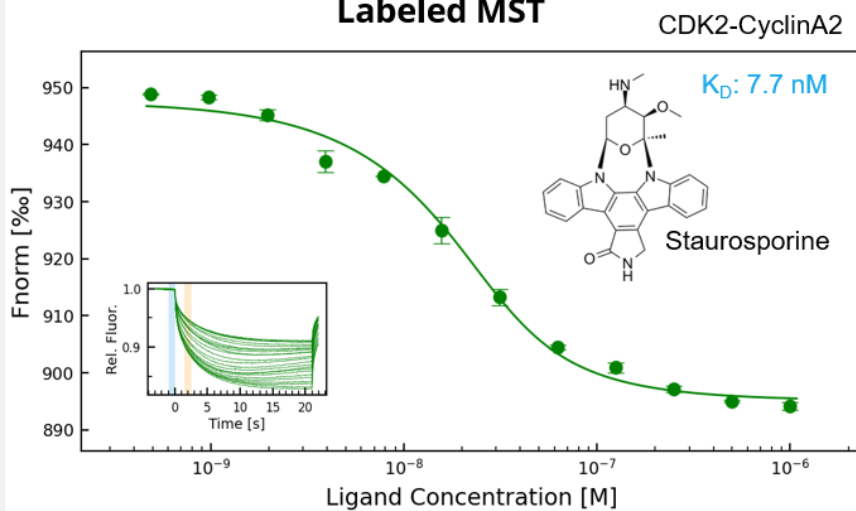
Variety of Biophysical and Biochemical Assays Available

○ 2-week turnaround time

Label-free TSA (nanoDSF)

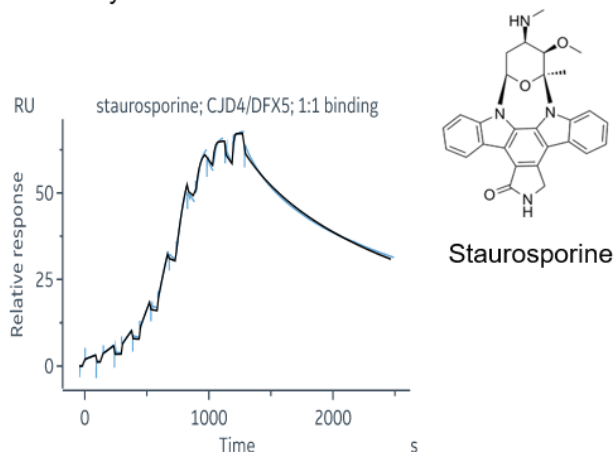


Labeled MST



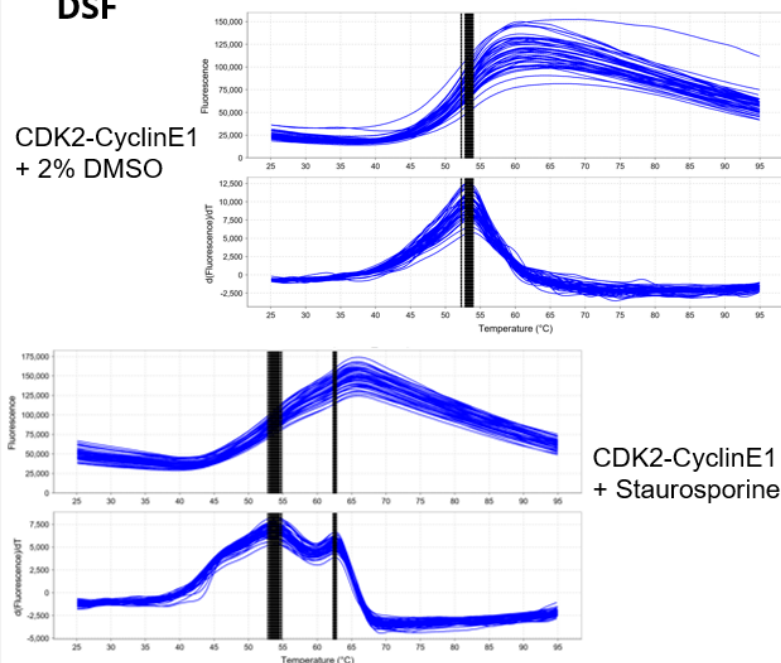
SPR

CDK2-CyclinE1



DSF

CDK2-CyclinE1 + 2% DMSO

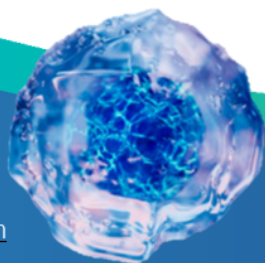


Contact us

Technical Experts:

Crelux CR@wuxiapptec.com

DB_Service@wuxiapptec.com



wuxibiology.com



Search for more protein info



Find us via LinkedIn

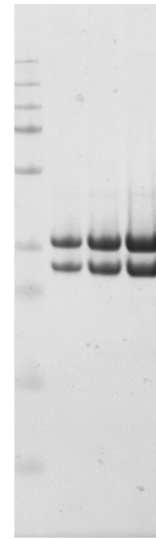
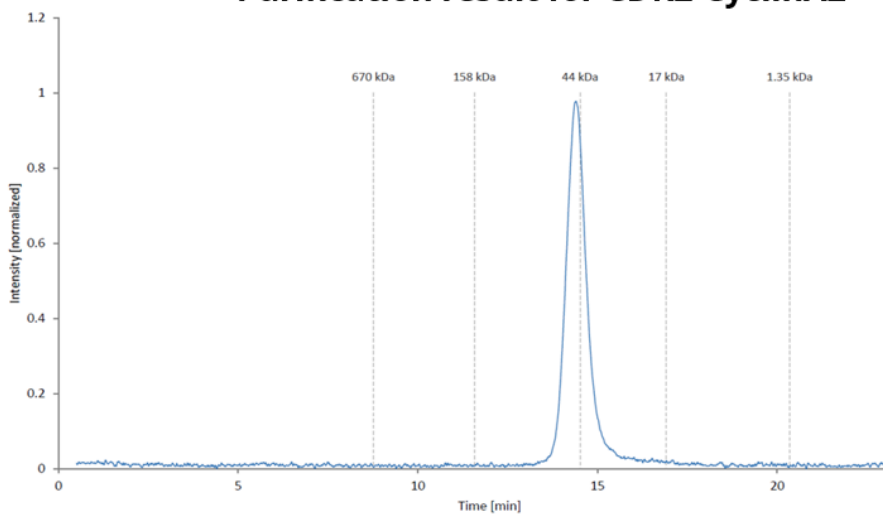
CDK2-CyclinE1/A2

Prime Protein Production

Variety of different constructs available:

- CDK2, CDK2-CyclinE1, CDK2-CyclinA2
- Avi-and His-tags, truncations, phosphorylation states
- Stocked protein available

Purification result for CDK2-CyclinA2



X-ray Crystallography

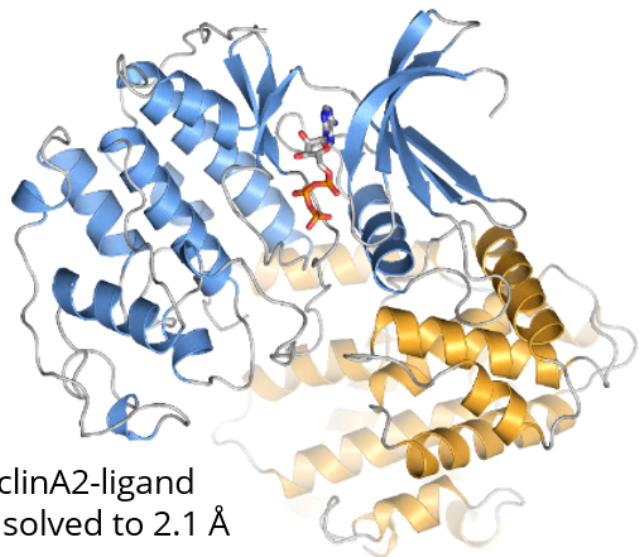
Crystallization systems established

CDK2, CDK2-CyclinE1, CDK2-CyclinA2

Covalent and non-covalent compounds

Allosteric and orthosteric compounds

2 Months turnaround time



CDK2-CyclinA2-ligand complex solved to 2.1 Å

Technical Experts:

CreLux CR@wuxiapptec.com

DB Service@wuxiapptec.com

Contact us

wuxibiology.com