

Immunology platform

- Comprehensive range of immunology assays
- Advanced laboratory tools and analytical methods
- Experienced professional team
- Support IND filing



A deep understanding of immunology, providing fully validated and reliable method development



50+ dedicated scientists specialized in immunology assays



10+ years experience
Delivered 200+ projects in 2022



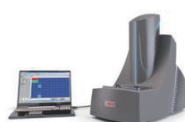
Bio-Plex200



Cytex Aurora



AID Elispot Reader



MSD-SQ120



PE-Envision



BD FACS Aria III

Immunology assays

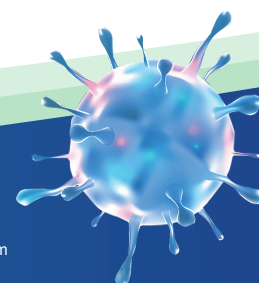
Categories		Assays
Binding & blocking	Biochemistry	HTRF, ELISA, AlphaLISA
	Biophysics	SPR (Biacore), MST, DSF and nanoDSF
	Cell level	Flow cytometry
Immune cell activation		T cell activation & proliferation & cytokine
		B cell activation
		NK cell activation & proliferation & cytokine
Immune cell suppression		MDSC suppressive assay
		Treg suppressive assay
Immune cell polarization & differentiation	T cell polarization	Treg
		Th1
		Th2
		Th17
	Macrophage differentiation	M1/M2 macrophage
	DC maturation	MDSC
Antigen presentation (mixed lymphocyte reaction, MLR)		DC differentiation
		DC co-culture with T cells
		Mouse allogenic splenocytes
<i>in vitro</i> cytotoxicity	T cells	Antigen specific killing assays
	NK cells	NK-92 induced cytotoxicity
		Primary NK cell induced cytotoxicity (ADCC)
	Macrophage	Antibody-dependent cellular phagocytosis (ADCP)
	Complement	complement-dependent cytotoxicity (CDC)



Contact us

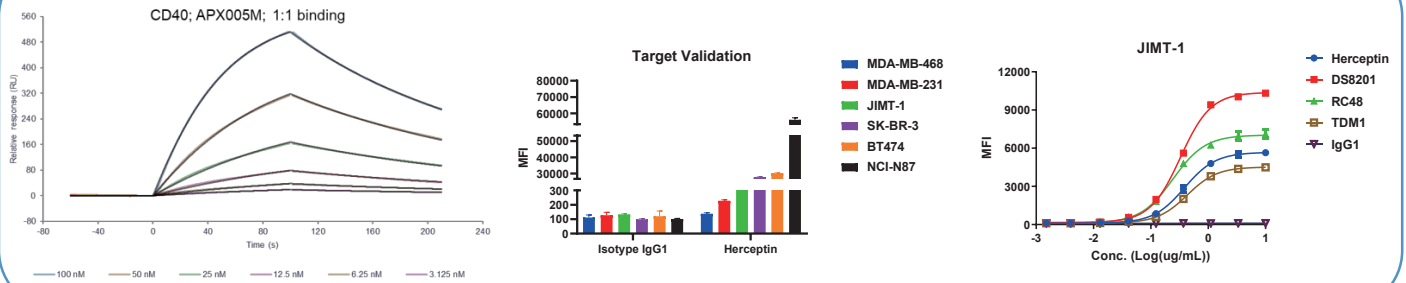
Technical: Pharmacology-BD-Translation@wuxiapptec.com
BD USA: mahnaz_arjomand@wuxiapptec.com
BD EU/UK/Israel: dave_madge@wuxiapptec.com

BD China: xu_longji@wuxiapptec.com
BD Japan: fumio_itoh@wuxiapptec.com
BD Korea: sycho@wuxiapptec.com

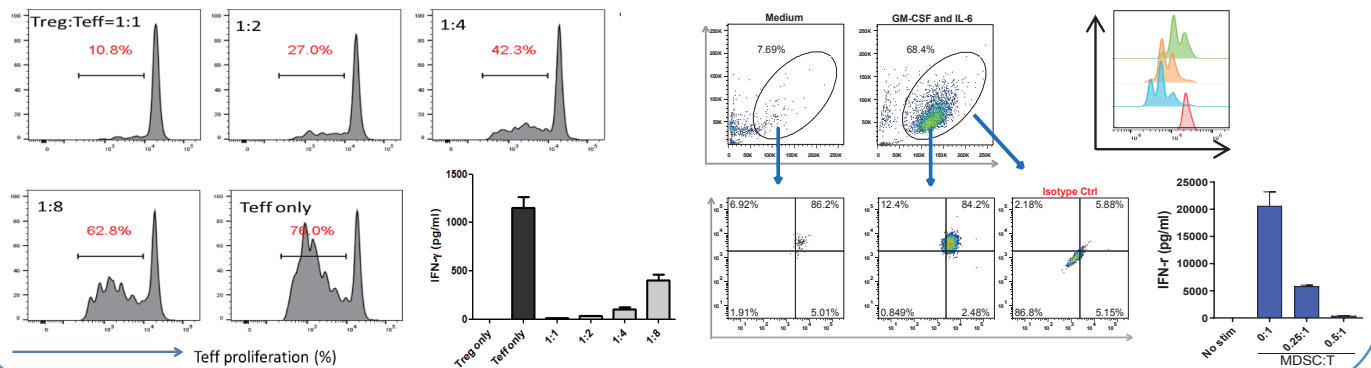


Case study: immunology services

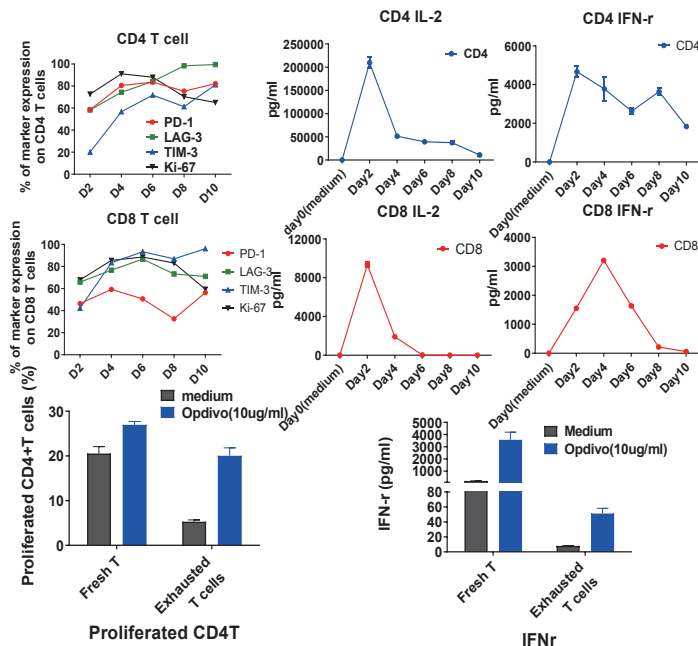
Binding assays by SPR and FACS



Suppressive assay



T cell exhaustion *in vitro*



Cytokine-induced STATs Phosphorylation

