

Autoimmune and inflammatory disease models

- Autoimmune and inflammatory diseases
 - Animal disease model
 - *in vitro* and *ex vivo* methodologies
- Multiple sclerosis, inflammation of respiratory diseases, inflammatory bowel disease, arthritis and systemic lupus erythematosus

Covering more

Diving deeper



One-stop service

Integrated services to provide **end-to-end** solutions for pre-clinical packages, enabling evaluation of *in vitro* / *in vivo* correlation and PK/PD efficacy correlation



Talents and skills

Dedicated team with **10+** years experience in immunology and IND-enabling studies



Diverse disease types

40+ disease models covering a wide range of **indications** and **animal species** including **large animals and NHPs**, enabling a seamless translation into IND studies and beyond.



High-quality models

Stable disease models with excellent **reproducibility**, validated **by multiple end-points** and biomarkers to drive and accelerate the discovery and development of innovative drugs.

Well-validated disease models in house

Autoimmune disease models



- Alopecia areata
- Atopic dermatitis (AD)
- Delayed type hypersensitivity
- Experimental autoimmune encephalomyelitis
- Experimental sjögren's syndrome
- Rheumatoid arthritis
- Systemic lupus erythematosus
- Systemic sclerosis



Inflammatory disease models

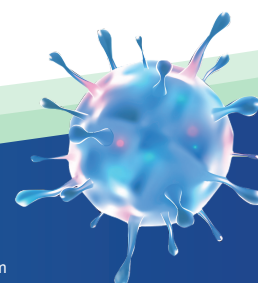
- Acute inflammation models
- Asthma
- Gout
- GvHD
- Inflammatory bowel diseases
- Pancreatitis
- Peritonitis
- Psoriasis
- Sepsis



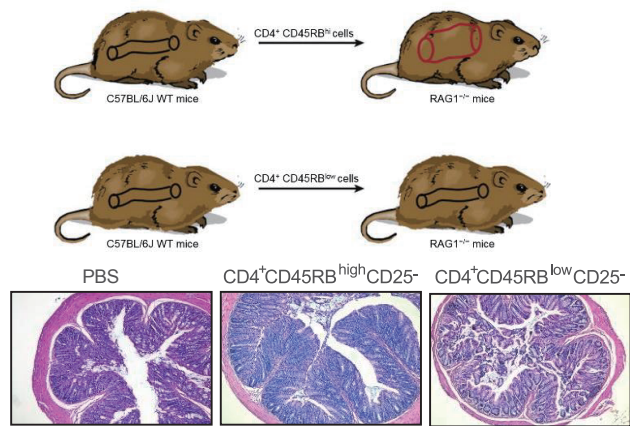
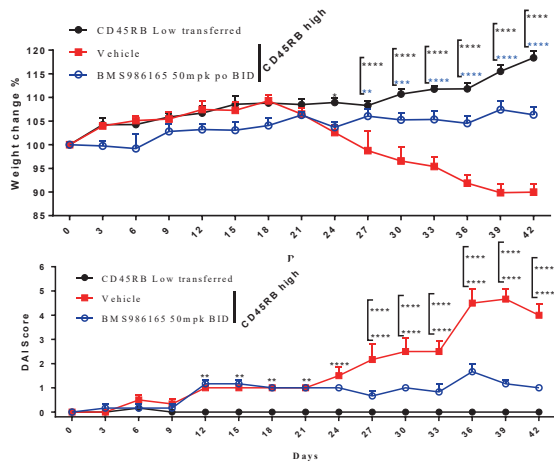
Contact us

Technical: Pharmacology-BD-Translation@wuxiapptec.com
BD USA: mahnaz_arjomand@wuxiapptec.com
BD EU/UK/Israel: dave_madge@wuxiapptec.com

BD China: xu_longji@wuxiapptec.com
BD Japan: fumio_itoh@wuxiapptec.com
BD Korea: sycho@wuxiapptec.com

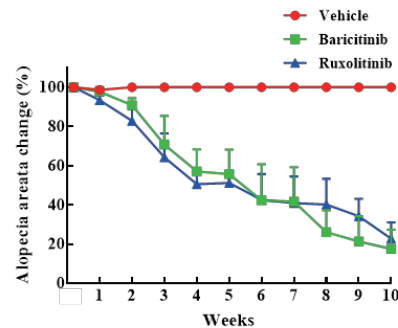
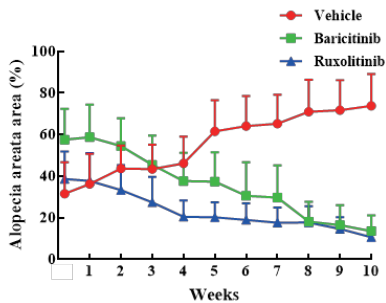


Case study: T cell transfer-induced colitis model in SCID mice or RAG1-/- mice



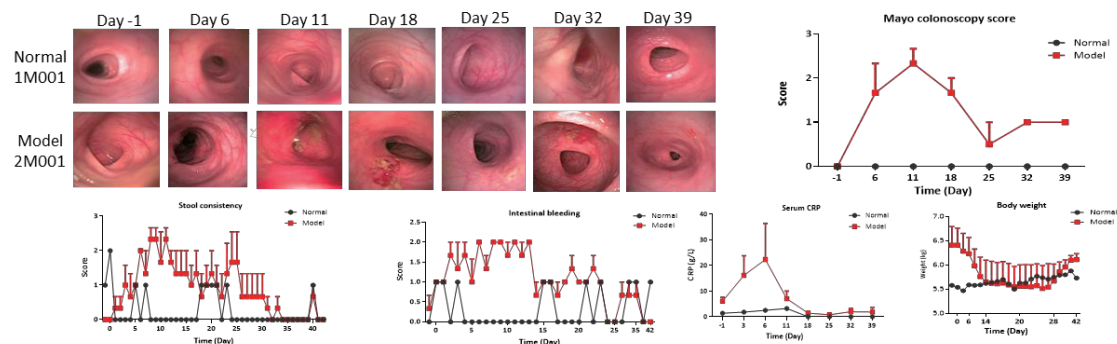
- Left: In-life assessments of T cell transfer-induced colitis in SCID mice.
- Right: Schematic diagram of T cell transfer-induced colitis in RAG1^{-/-} mice and representative images of H&E staining for colon tissue.

Case study: Alopecia areata model



- Left: In-life assessments (alopecia areata area and alopecia areata change) of full-thickness skin grafts-induced alopecia areata in C3H/HeJ Mice.
- Right: The representative image of alopecia areata area for full-thickness skin grafts in C3H/HeJ Mice.

Case study: DSS-induced acute ulcerative colitis model in NHPs



- Top: The representative colonoscopic images and Mayo colonoscopy score.
- Bottom: Significant changes of stool consistency, intestinal bleeding, serum CRP, and body weight.