

Computer-Aided Drug Discovery (CADD) Service

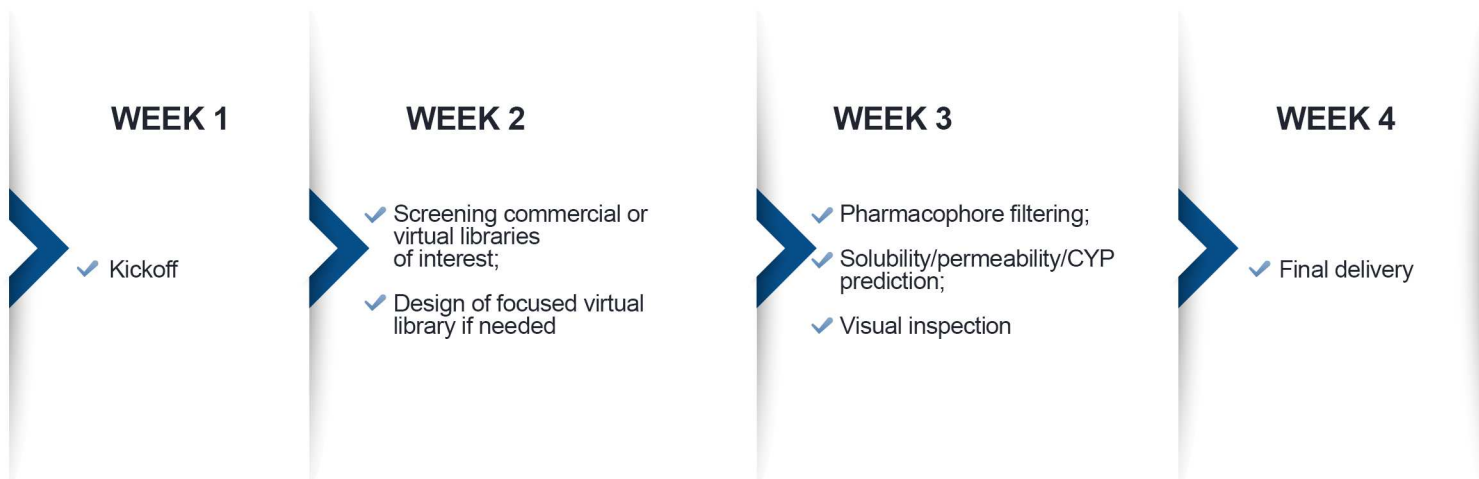
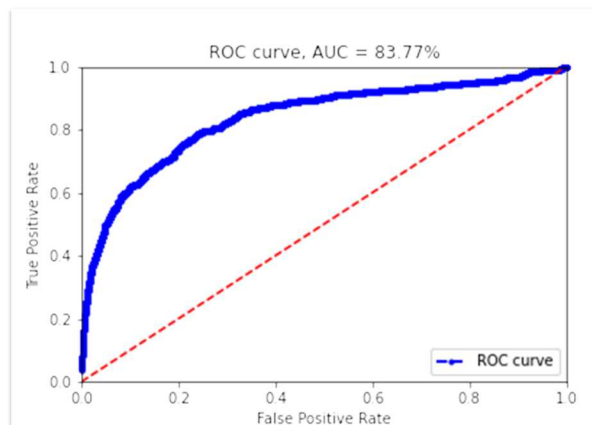
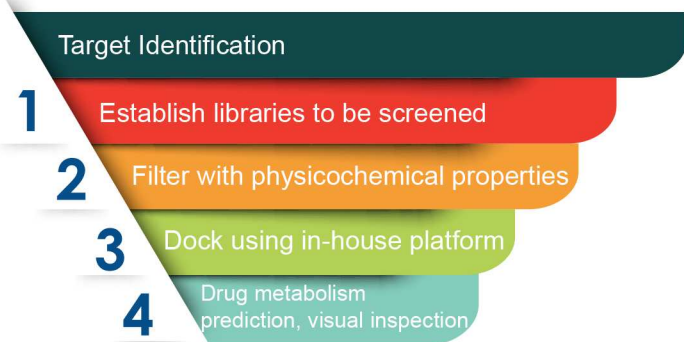
CADD Services

Computational chemistry methods are increasingly being combined with SOTA experimental techniques to enhance the success rate of drug discovery and explore the potential of new modalities.

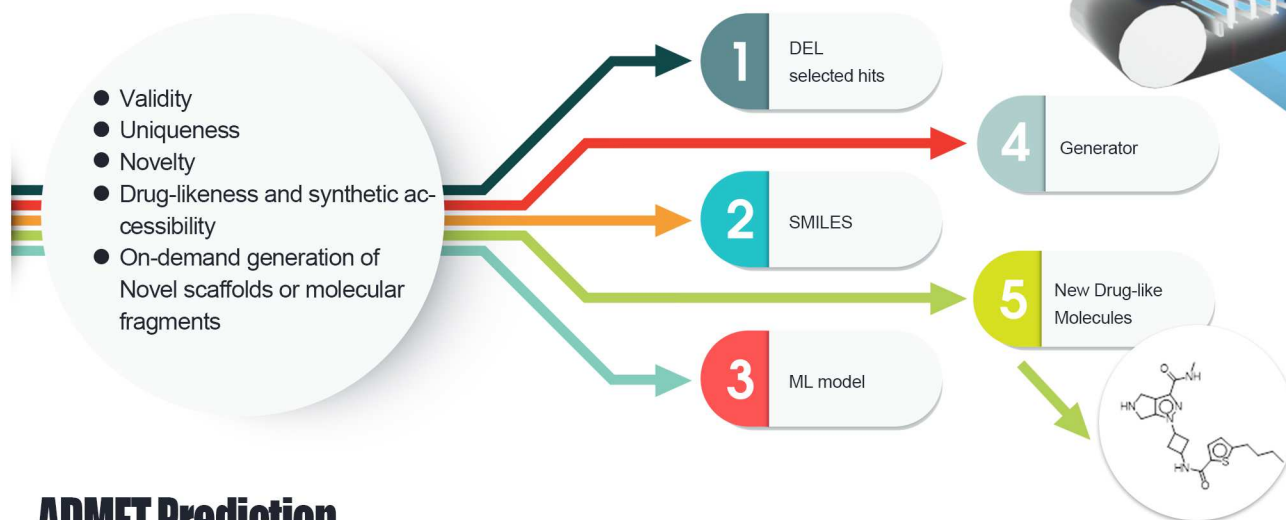


Virtual Screening

- 50+ molecules delivered in Four Weeks

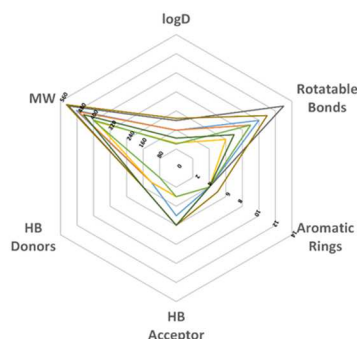


Scaffold and R-group Replacement



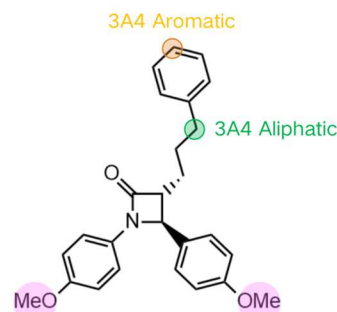
ADMET Prediction

● Radar Chart of Calculated Physicochemical Properties



We observed good correlations between the calculated logP (or logD) values and experimental solubility. The predicted PSA values also correlate well with measured membrane permeability. Simply calculating the physicochemical properties can provide us a hint on improving the ADME properties of small-molecule drug candidates.

● Prediction of cytochrome P450 mediated metabolism

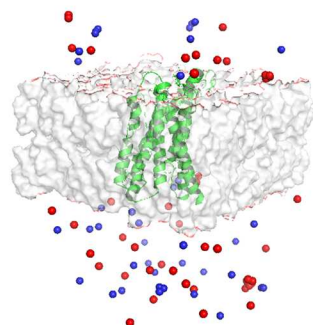


Possible metabolism sites of compounds of interest can be predicted.

Molecule source: doi.org/10.1021/jm050529c

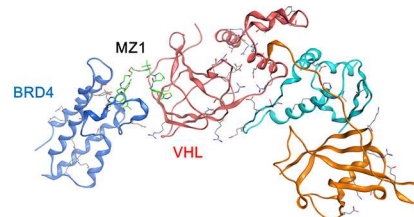
Molecular Modeling and Simulations

● Membrane Proteins Embedded in Lipid Bilayers



Conformational change
Analysis of h-bonds/salt bridges
Mutation effect

● Proteolysis Targeting Chimera -induced Ternary Complexes



Optimization of linker length and type
Simulating PPI at all-atom level
Predicting physicochemical properties and synthetic accessibility of Proteolysis Targeting Chimera molecules



HitS Website



PHONE

US: +1(857)500-0235
China: +86(021)2066-3521



EMAIL

HitS_service@wuxiapptec.com



WuXi AppTec HitS US

Suite 111,22 Strathmore Road Natick
MA 01760-2434, USA

Crelux GmbH, a WuXi AppTec Company

Am Klopferspitz 19a
82152 Martinsried, Germany

WuXi AppTec HitS China

240 Hedan Road, Shanghai 200131, China
1318 Wuzhong Avenue, Suzhou 215104, China

WuXi AppTec HitS